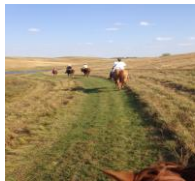


## Facilities at Glacial Lakes State Park

- 1880 Acres
- 38 Camping Sites
- 4 Walk-in Sites
- 8 Horse Camp Sites
- 4 Year-round Camper Cabins
- 2 Camper Cabins in the Lower Campground
- 1 Group Camp with shelter, electricity, & fireplace
- Shower facilities
- Self- guided interpretive nature trails
- 11 Miles of Horse and Snowmobile trails
- Cross Country Skiing trails
- Snowshoeing
- Clear Water Swimming Beach
- Kayaking
- Canoeing
- Paddle boarding
- Fishing



Glacial Lakes State Park is a unique segment of soaring hills contrasted by supine valleys which were formed by the last glaciers more than 10,000 years ago. Whether you have one hour or an unlimited time to be our guest, the Department of Natural Resources staff hope you will have a memorable experience enjoying the many recreational opportunities awaiting you in Glacial Lakes State Park.



Stargazing one Saturday of the month starting in April. Bring a flashlight with a red filter, warm cloths, and your curiosity. Stargazing is sponsored by **Glacial Lakes Astronomers and Stargazers Society.**

Taking a hike during warm summer days, a swim in the sparkling, clear lake is a popular activity at Glacial Lakes State Park. A swimming beach and drive-in boat access is available both of which are handicapped accessible. There are several lakes, ponds and marshes w within the park's 180 acres of prairie grass and woodlands. The largest lake is Mountain Lake, it is a 56 acre, and spring fed lake which is home to Walleye, Northern Pike, Crappies and Sunfish. Its entire watershed lies within the park, accounting for the year-round clarity and purity of its waters.



Visitors who come to Glacial Lakes State Park won't want to miss the most excellent opportunity to appreciate the Minnesota Prairie



We encourage you to join our group of Friends. We were encouraged to organize when the park was faced with fall and winter closure. Since then our group has become a sounding board for the park improvements and we have been the volunteer group that lends a helping hand when the park staff needs some extra help.



**A GREAT PLACE FOR FAMILY FUN,  
ADVENTURE AND EDUCATION!**

**Friends of Glacial Lakes have helped to purchase many things the park would have otherwise done without.**

### Friends Contributions

GLSP Friends group began in 2003. Since then the Friends group have successfully:

1. Purchased one Camper Cabin for overnight usage in the Lower Campground
2. Coordinated the First "Buckthorn Bash" in 2007
3. Promotes National Get Out Doors Day and provides lunch for visitors.
4. Sponsors an Annual Egg Hunt with prizes and informative nature demonstrations.
5. Sponsors the Candle Light Event which encourages the public to see the park in the winter.
6. Purchased lanterns for the Candle Light Event.

#### What Else Should You Know?

For more information about Glacial Lakes State park you may visit our website at:

[www.glaciallakesstateparkfriends.com](http://www.glaciallakesstateparkfriends.com)

or the DNR's Park and Trails site at:

[www.dnr.state.mn.us/state\\_parks/Glacial.lakes/index.html](http://www.dnr.state.mn.us/state_parks/Glacial.lakes/index.html)

or Like us on Facebook  
[www.facebook.com](http://www.facebook.com)



Become a Friend of Glacial Lakes State Park by sending in this Friendly form.

- Family - \$30.00
- Individuals - \$20.00
- College Students /Retiree - \$15.00

- Active Member
- Donation ONLY

Are you interested in volunteering?

YES NO MAYBE

Your tax-deductible contribution goes directly to the Friends of Glacial Lakes State Park, a non-profit organization.

Name \_\_\_\_\_

Address \_\_\_\_\_

City \_\_\_\_\_ State \_\_\_\_\_ Zip \_\_\_\_\_

Phone \_\_\_\_\_

Email Address \_\_\_\_\_

Please Spell Clearly

This is our #1 form of communication.

#### Make checks Payable to:

Friends of GLSP

#### Send to:

Friends of GLSP  
25022 County Road 41  
Starbuck, MN 56381

Become a  
**FRIEND**  
Of GLSP

## Friends of Glacial Lakes State Park



Join Us  
Help Make a Difference

Glacial Lakes State Park  
25022 County Road 41  
Starbuck, MN 56381  
(320)239-2860

You can make your camping and lodging reservation for Minnesota state parks and recreation areas online at:

[mndnr.gov/reservation](http://mndnr.gov/reservation)

or by calling

**866-857-2725 (TTY:952-936-4008)**

from 8am to midnight